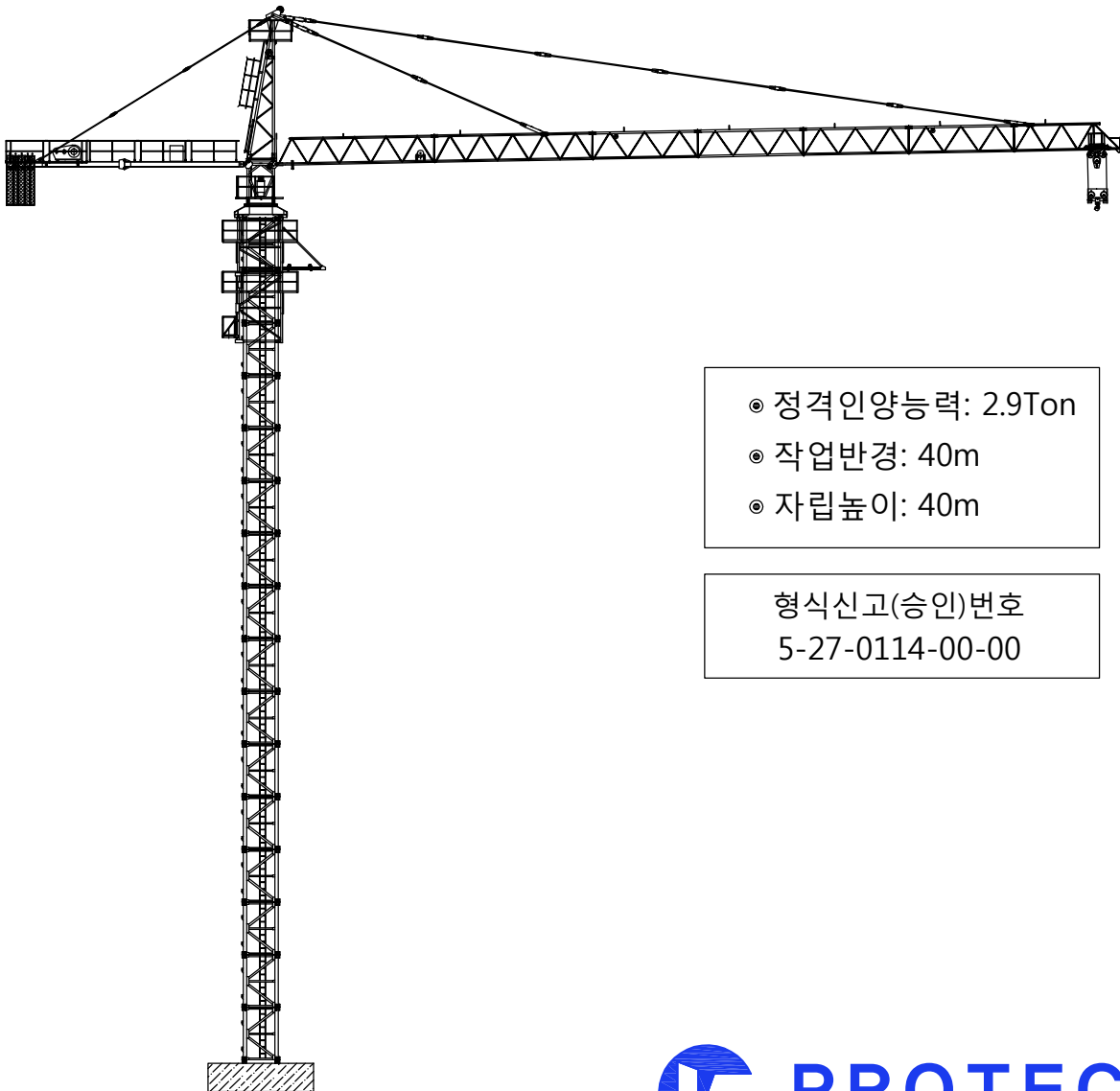


TOWER CRANE

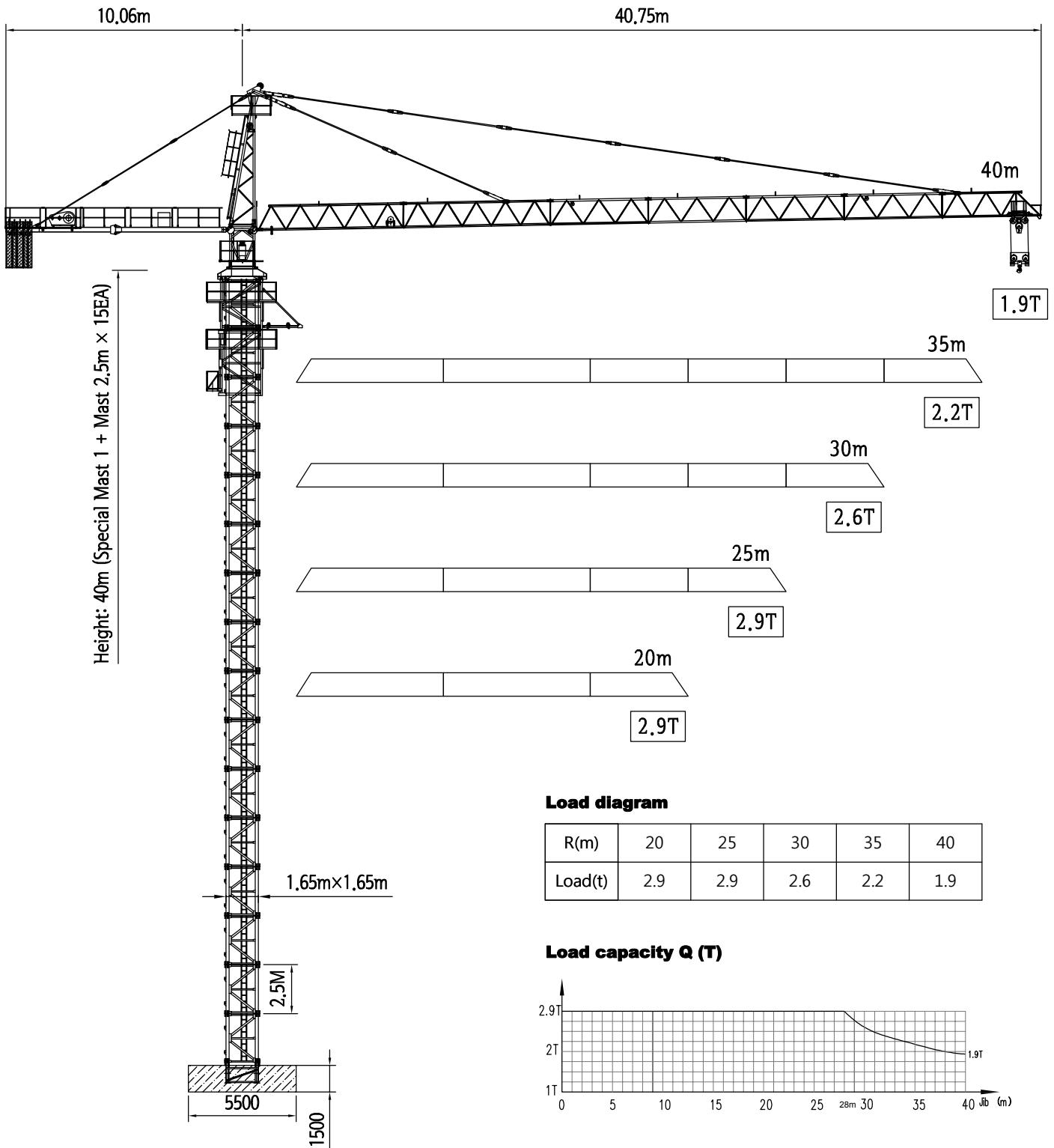
HS4019



- ◎ 정격인양능력: 2.9Ton
- ◎ 작업반경: 40m
- ◎ 자립높이: 40m




형식신고(승인)번호
5-27-0114-00-00

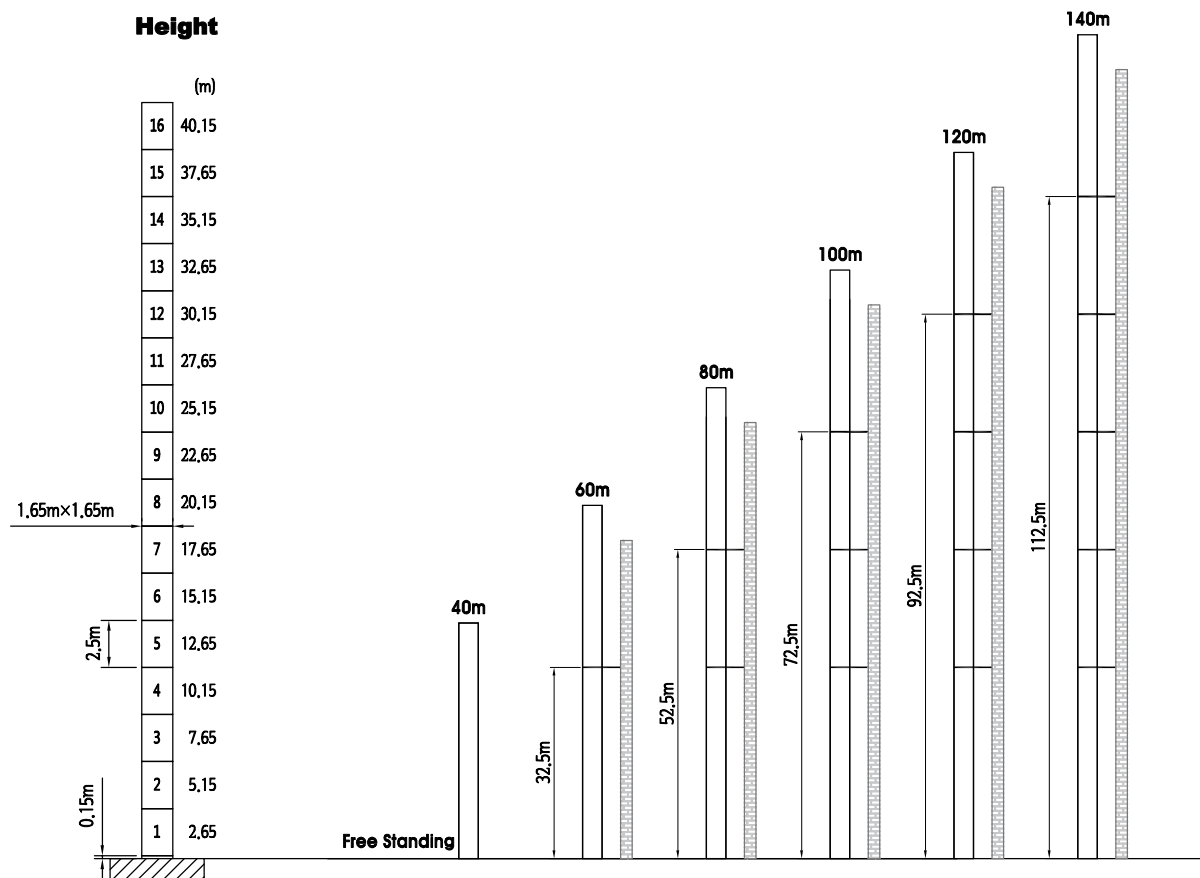
Radius and Capacity



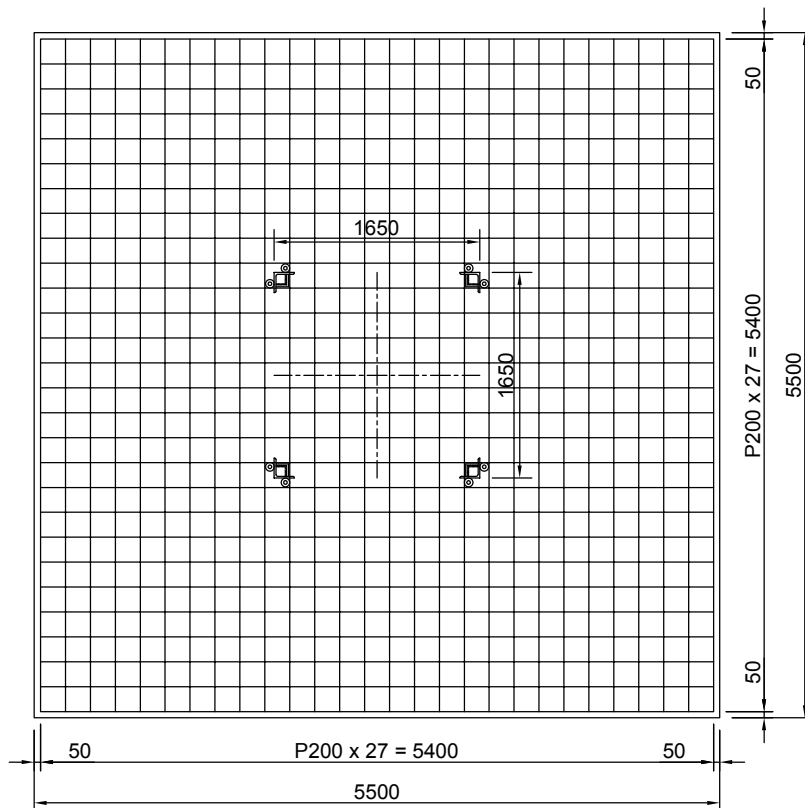
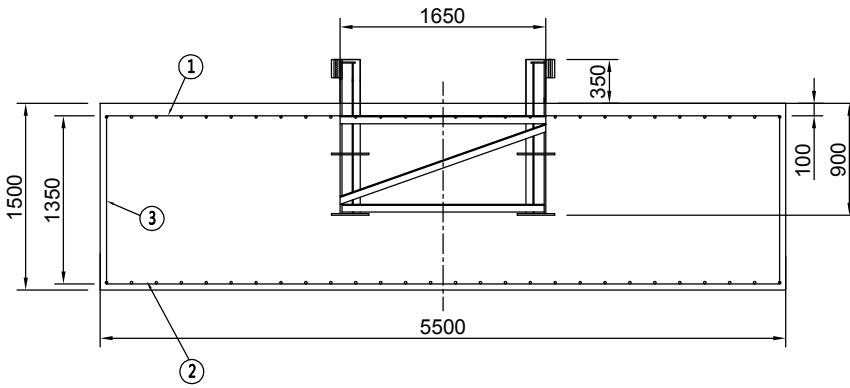
Technical Parameter

Item	Unit	Parameter
Max. hoisting Capacity	t	2.9
Basic Height	m	40

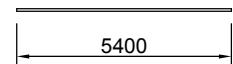
Mechanisms specification				
Hoisting Mechanisms		Model: YZTD200L-4/8/24		
		Motor Power	KW	15 / 15 / 4
		Hoisting speed	m/min	7 / 30 / 60
Slewing Mechanisms		Model: YZR132M2-6		
		Motor Power	KW	5.5
		Hoisting speed	r/min	0 ~ 0.5
Trolley Mechanisms		Model: YD112M-4/6		
		Motor Power	KW	2.8
		Hoisting speed	m/min	0 ~ 33



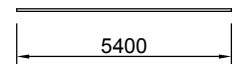
Foundation



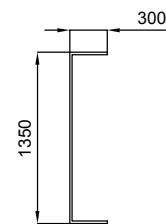
① HD19*5400L-56EA



② HD19*5400L-56EA



③ HD19*1950L-108EA



NO	DESCRIPTION	SIZE	MAT'L	Q'TY
1	REINFORCING S.BAR	Ø19*5400L	SD40	56
2	REINFORCING S.BAR	Ø19*5400L	SD40	56
3	REINFORCING S.BAR	Ø19*1950L	SD40	108

NOTE.

1. CONCRETE SPECIFIC WEIGHT: 2400Kg/m³
2. SOIL PRESSURE: 20TON/m²
3. CONCRETE GRADE: 240 Kg/cm²